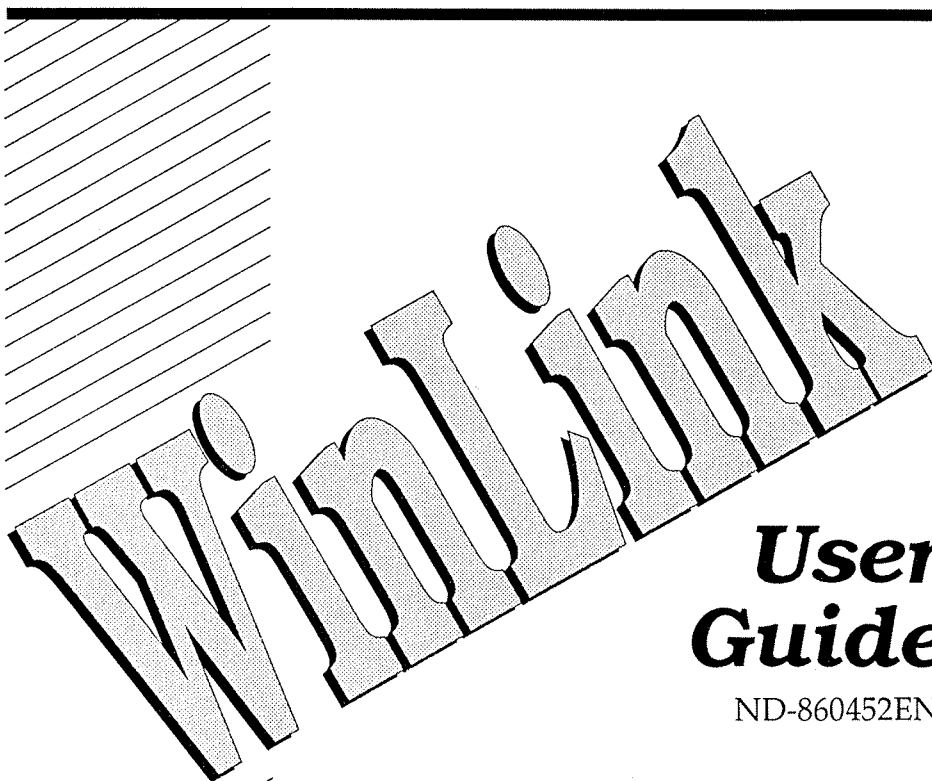


WinLink





User Guide

ND-860452EN1

Is WinLink installed on
your PC? If not, read
the folder "How to
install WinLink".

Contents

What is WinLink?	3
Using the PC as a terminal	4
Logging in	4
Resize and iconize windows	5
Copy to the clipboard	6
Scrolling the screen picture	7
Resize the terminal window	7
Disconnect from the host computer	7
Transferring files from the host computer to your PC and back	8
1. Start EasyLink	8
2. Choose which host files to transfer	10
3. Choose the destination	11
4. Copy the files	12
5. Transfer the same files back to the host computer	13
Deleting files	14
Protection against deleting	14
Shortcuts	15
Get the correct file-type extension!	17
Useful information for advanced users	18
Select which host computer to connect to	19
Set screen colours and fonts	20
About screen fonts	21
Defining communication settings	22
Errors that may occur	23
Your PC slows down	23
The cursor disappears	23
Graphics are the wrong size	23
Error messages	24

MS-DOS® is a registered trademark and Windows™ is a trademark of Microsoft Corporation.

For more information about ND software products, contact your local ND representative or
 Norsk Data a.s, P.O Box 25 Bogerud, N-0621 Oslo 6
 Telephone: (02) 62 68 70 Telefax: (02) 62 68 71

The information in this manual is subject to change without notice. Norsk Data a.s assumes no responsibility for any errors that may appear in this manual.

What is WinLink?

WinLink is the tool that lets you communicate with an ND SINTRAN host computer from your PC.

WinLink gives you the best of two worlds. On the one hand, you have your PC with your integrated and user-friendly Windows applications. On the other hand, you have the host computer with its routines for central backup, shared resources, and an advanced electronic mail system. WinLink is the "link" that makes the communication between the PC and host simple and efficient.

WinLink consists of several programs. With these programs you can:

- connect to a SINTRAN host and use the PC as a terminal
- copy files from the PC to the host and vice versa
- select the host computer you want to connect to (for Ethernet communication)
- select screen colours and fonts when you use the PC as a terminal
- define communication parameters (for serial connection)

WinLink consists of fully integrated Windows programs that you can activate at any time. Like all Windows programs, you can run WinLink programs in separate windows, iconize and resize windows, etc.

WinLink has the product number ND 230210.

Using the PC as a terminal

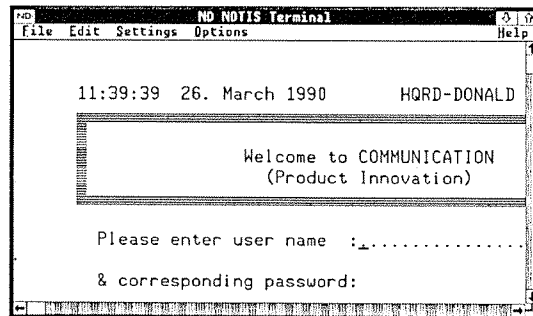
One of the most important functions of WinLink is that you can use your PC as a terminal against a SINTRAN host computer.

Logging in



Notis Terminal

1. In Program Manager, under ND Applications, double-click on the icon for NOTIS Terminal.
2. You will see a window something like this:



3. Log in as usual.

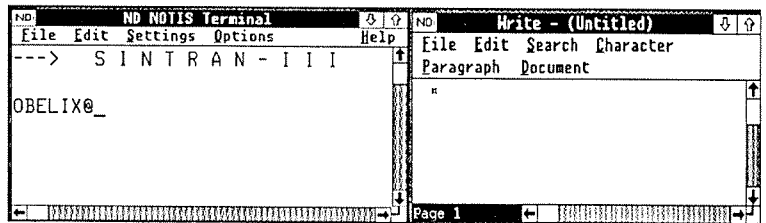
Important!

When asked for terminal type, answer 93!

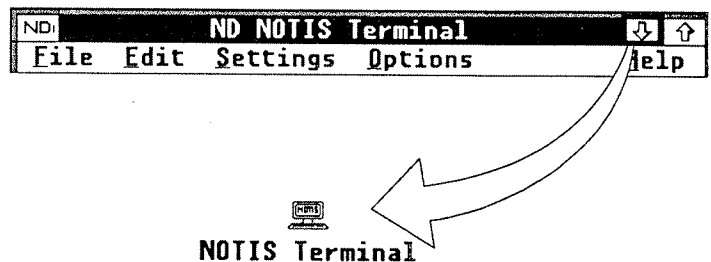
Resize and iconize windows

The terminal connection to the host computer is running in a separate window, the **terminal window**. You can change the size and iconize this window.

Point at the **top right corner** of the terminal window, and drag the pointer downwards until the window has the size you want. In this way you can have the terminal connection running in one window, and a PC program in another, and quickly jump back and forth between the two just by clicking on the window you want to work in.



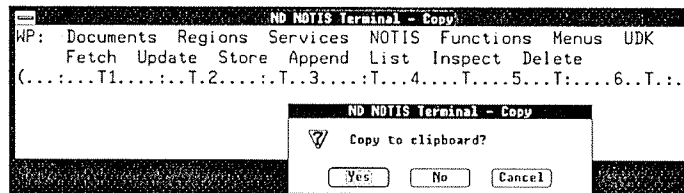
You can also iconize the terminal window by clicking on the **minimize box** in the top right corner of the window.



Copy to the clipboard

You can copy text from the screen picture in the terminal window to the clipboard. This is useful in many situations. Let us say you are working with a document in PageMaker. A colleague has written a contribution, and mailed it to you over NOTIS-ID. You can then copy the text directly from ID in the terminal window to the clipboard, and from there paste it into your PageMaker document.

1. Select **Edit/Copy** from the menu in the terminal window. The screen changes colour, and the pointer changes its shape to a **+**.
2. Mark the text you want to copy by placing the pointer, pressing the mouse button, and dragging the pointer across the text area you want to copy. The area is highlighted.



3. When you release of the mouse button, you are asked whether you want to copy the marked area to the clipboard. Answer 'Yes' if you are happy with the area you have marked. Answer 'No' if you want to mark a different area; answer 'Cancel' to interrupt the operation.

You then activate the window containing the program in which you want to include the text, and paste it the normal way.

Note

You can only copy ANSI characters to the clipboard. Graphics, special characters, tab settings, etc, will either not be copied, or will be translated to ANSI characters and distorted. This means the function is best suited for copying text.

Scrolling the screen picture

If the terminal window is too small to show the entire screen picture of the application you are working with, you can scroll the screen by using the **scroll bars**. If you select **Settings/Auto-scroll**, the screen will automatically scroll to show the part of the screen that contains the cursor.

Note

If you cannot see the entire screen picture, even if you have maximized the terminal window, you may use a screen font that does not correspond to the screen you have. See page 20.

Resize the terminal window

If you have changed the size of the terminal window, you can set it back to its original size by selecting **Resize** from the **Options** menu.

Disconnect from the host computer

The safest way to disconnect from the host is to press **EXIT** or give the **SINTRAN LOG** command.

You can also break the connection to the host by pressing **ALT + F4**. The system responds by display "This will end your terminal session", and you have to confirm by clicking on **OK**. However, you will still be logged in on the host.

Note

Remember that you have to be logged in to be able to use certain programs on the PC, for instance WinPrint and EasyLink. If you only want to use these programs, and do not want to use any of the applications on the host, we recommend that you close the terminal window.

Don't forget the security! Never leave your PC with an open connection to the host!

Transferring files from the host computer to your PC and back

Another important function in WinLink is the possibility to copy files between the host and the PC. You can copy PC files to the host to make them available for other users, or as a backup. You can also copy large files that occupy a lot of space on your hard disk, and keep them on the host until you need them.

It is also useful to be able to fetch information from the host and process it on your PC, for instance information from your intray in NOTIS-ID.

For these tasks, you use the program in the WinLink package called EasyLink.

1. Start EasyLink

If you have not already done so, log in on the host computer as described on page 4.

Close the terminal window.

Note

For those who have used EasyLink before:

Do not press the **SYS** key to return to the PC.

This is how you start EasyLink:



EasyLink

In Program Manager, under ND Applications, double-click on the icon for EasyLink.

You see the dialog box for EasyLink.

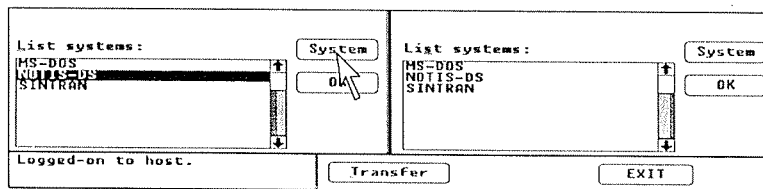
ND EasyLink	
File Options Session	
CHOOSE SOURCE FILE SYSTEM.	CHOOSE DESTINATION FILE SYSTEM.
Transfer from:	Transfer to:
List systems:	List systems:
MS-DOS NOTIS-DS SINTRAN	MS-DOS NOTIS-DS SINTRAN
<input type="button" value="System"/>	<input type="button" value="System"/>
<input type="button" value="OK"/>	<input type="button" value="OK"/>
Logged-on to host.	<input type="button" value="Transfer"/> <input type="button" value="EXIT"/>

2. Choose which host files to transfer

Note

When you start choosing which host files to transfer, the system will need a few seconds to display the file names. This is indicated by an hourglass on the screen. If you do not wish to list all files, you can interrupt the process by pressing the x key or clicking on the **Stop Listing** button.

Look at the **System** button on the left. The text in the button should be grey. If the text is not grey, click on the button.



Under **List systems** on the left, double-click on the file system you want to transfer files *from* (NOTIS-DS or SINTRAN).

If you choose SINTRAN:

- click once on the file you want

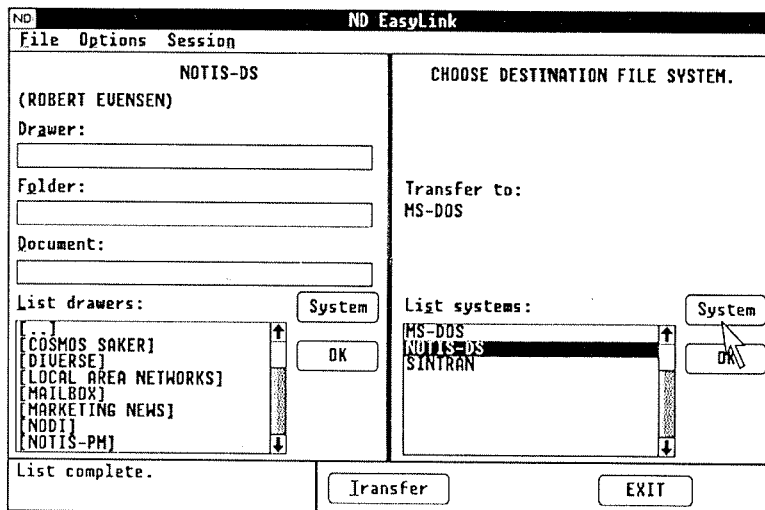
If you choose NOTIS-DS:

- double-click on the drawer you want
- double-click on the folder you want
- click once on the file you want

You can also transfer more than one file at a time. Choose several files by holding down the **SHIFT** key while clicking on the files you want to transfer.

3. Choose the destination

Look at the **System** button to the right. The text in the button should be grey. If the text is not grey, click on the button.



Under List systems to the right:

- double-click on **MS-DOS**
- find the directory that you want to place files in, and double-click on it.

4. Copy the files

Click on the **Transfer** button

The files are now copied from the host computer to your PC. The file names are retained but sometimes abbreviated (see the box below).

Click on the **Exit** button

Go to the directory where you stored the files, and start working.

Note

On your PC, file names can have up to eight characters plus a three character extension (for example BULLETIN.TXT).

If a SINTRAN or NOTIS-DS file name is too long, the PC removes the surplus characters. The SINTRAN file name NEWSLETTER:TEXT becomes NEWSLETT.TXT in MS-DOS. The extension :TEXT is automatically abbreviated to the correct PC extension .TXT.

For the file types other than text files, the abbreviation of the extension will not necessarily be correct and you may have to rename the transferred files to get the correct extension. However, if you know how to edit the WIN.INI file, you can insert an instruction for the correct abbreviations in this file (see page 17).

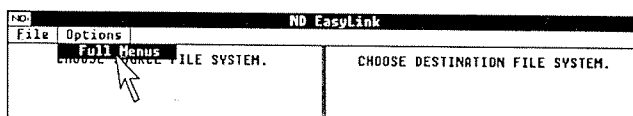
The character set used to display national characters in a file name will depend on the UE language on the host computer.

5. Transfer the same files back to the host computer

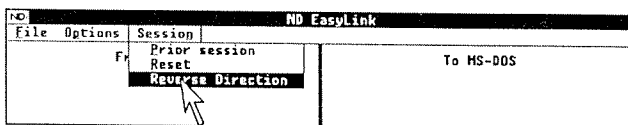
When you have finished working on the files, you can transfer them back to the host as follows:

Start EasyLink (see page 8).

From the **Options** menu, choose **Full Menus**.



From the **Session** menu, choose **Reverse Direction**.



Under **List files** on the left, click on the files you want transferred back to the host.

Click on **Transfer**.

Note

ND EasyLink always transfers files from left to right in the dialog box.

Deleting files

From the **Options** menu in EasyLink, choose **Delete On**.

Under **List files**, click on the files you want to delete.

Click on **Delete**.

If you have chosen **Warnings ON** (see below), you will see a dialog box asking you to confirm the delete operation.

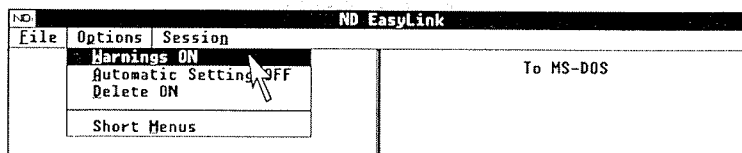
When you have finished deleting, choose **Delete OFF** from the **File** menu.

Protection against deleting

From the **Options** menu in EasyLink, you can choose whether or not you want to receive a warning message when deleting files.

Warnings ON: If you delete or transfer a file, you are asked to confirm the action. This prevents you from deleting or overwriting files you want to keep.

Warnings OFF: If you delete a file, you get no warning first, but you see that the file has been deleted. If you transfer several files, you will see how many of the files are transferred. You can interrupt the process at any time by pressing the space bar.



Shortcuts

ND EasyLink remembers

When you start EasyLink from a Windows program, the list box to the left will contain the same files as the last time you worked in that program.

Perhaps you keep all the files for a certain task in a separate NOTIS-DS folder. If you transferred this folder the last time, EasyLink will remember and will list the same files again. To transfer these files, simply click on **Transfer**.

When you have finished working with the files (or want a break), choose **Reverse Direction** from the **Session** menu and transfer the updated files back to the host computer.

To remove the file listing, choose **Reset** from the **Session** menu. To regain the file listing, choose **Prior Session**.

To switch off the "remember" function altogether, choose **Automatic Setting OFF** from the **Options** menu. To switch on again, choose **Automatic Setting ON**.

Transferring or deleting large groups of files

You can choose to transfer large groups of files that start with certain letters or have a certain file-type extension.

Perhaps you do your accounting in Excel and use linked spreadsheets. You can then let all your spreadsheets start with the year and end with :XLS (e.g. 89TOTAL:XLS). If you want to start an update for all spreadsheets from 1989, simply type **89:XLS** in the **File:** edit box.

This technique can also be used to delete large groups of files.

Placing a file-transfer operation in the WinSMX menu

If you have WinSMX installed on your PC, you can set up a specific file-transfer operation as an item in the SMX menu. For example, if you often copy files from NOTIS-DS to MS-DOS, you can place this action in the menu. This is how (see the WinSMX User Guide for more information):

1. In the **SMX** menu, click on **Change System Menu**
2. Under **Menu Item Name**, type a suitable name, for example **Transfer DS to DOS**.
3. Under **Applications in**, double-click on **ND-OWS** and **ND-UTIL**, then click on **EASYLINK.EXE**.
4. Click on the **Options>>** button.
5. Under **Startup Parameters**, type **NOTIS-DS MS-DOS**.
6. Click on the **Save** button.

The next time you want to transfer files from NOTIS-DS to MS-DOS, you can simply choose **Transfer DS to DOS** from the SMX menu.

Get the correct file-type extension!

On your PC, a file-type extension has up to three characters (for example .TXT or .SMB). Extensions that have more than three characters will be abbreviated when transferred from the host.

Text files are always abbreviated correctly (:TEXT automatically becomes .TXT). For other file-type extensions, the abbreviation will not necessarily be correct.

You can, however, insert instructions to ensure correct abbreviations in the WIN.INI file, provided you know how to edit this file.

1. Open the WIN.INI file and look under the heading [ND EASYLINK]. You see the entries

```
TEXT=TEXT  
TXT=TEXT
```

2. Type in the abbreviation instructions you want, using the same syntax as for TEXT files, for example:

```
SYMB=SMB  
SMB=SYMB
```

Note

The SINTRAN and NOTIS-DS file-type extensions must have four characters. The PC file-type extensions cannot have more than three characters.

Useful information for advanced users

- EasyLink automatically uses the same MS-DOS work directory as the program it is started from. If you have SMX, you can define another work directory for startup.
 - If you wish, you can choose to list only those files that start with certain letters or have certain file-type extensions. Just specify the letters and/or file-type extension you want in the **File:** or **Document:** edit box.
 - Note that some letter/extension combinations may not work with SINTRAN and NOTIS-DS. Try removing some characters from the specifications.
 - You can transfer files to or from a different SINTRAN user by specifying the user name in the **File:** edit box.
Example: If you type **(NEW-USER)d** in the box, EasyLink will list all files that start with the letter "d" on that user.
 - You can transfer files to or from a remote SINTRAN system. Use the same syntax as for transferring files within SINTRAN. The files cannot be listed in the dialog box.
 - When a file is transferred, the destination list in EasyLink is not updated. This is done to save time.
 - EasyLink always transfers from left to right. To transfer from the current right hand side of the dialog box, you have to choose **Reverse Direction** from the **Session** menu.
 - If you double-click on a file in the list box on the left side, EasyLink will suggest a name on the other side.
 - If the PC is rebooted, EasyLink will assume that you are logged off.
-

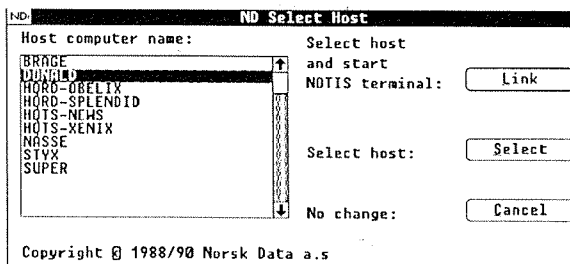
Select which host computer to connect to

If your PC is connected to an OpenLAN network (Ethernet), you can choose which host computer you want to connect to (if there is more than one host on the network, and if you are registered as a user on the host computer).



Select Host

1. In Program Manager, under ND Applications, double-click on the icon for **Select Host**.
2. You see a dialog box:



3. Double-click on the computer you want to connect to, and **NOTIS Terminal** will start. If you do not want to start NOTIS Terminal, click once on the host you want to select, and then click on the **Select** button. Next time you start NOTIS Terminal, you will be connected to the host that you selected.

Note

If you are running NOTIS Terminal (even as an icon) when you select a new host, you should go to NOTIS Terminal, log out and then log in again.

Note

If you connect to a new host, you will be disconnected from your current host.

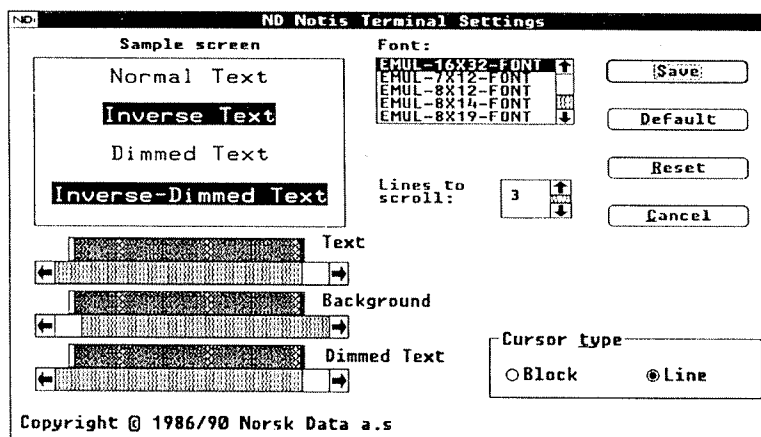
Set screen colours and fonts



Settings

You can specify several settings for the terminal window.

1. In Program Manager, under ND Applications, double-click on the icon for **Settings**.
2. You will see this dialog box:



You can set the colour of ordinary text, background colour, and inverted text. You can also choose which font you want on the screen, what cursor type, and how many lines you want the screen to scroll in each step. An example window shows how it will look.

About screen fonts

You should choose a font which is suitable for the type of screen you have. If you have chosen an unsuitable font, you will not be able to see all of the contents of the terminal window. You will then get scroll bars on the side of the terminal window.

The recommended fonts are:

EGA screen	EMUL-8X12 FONT
VGA screen	EMUL-8X14 FONT
Cornerstone 19" Publisher screen	EMUL-16X32 FONT
Wyse 700 screen	EMUL-8X19 FONT

Defining communication settings

If your PC is connected to the host via a serial cable, you can define several settings for communication between the PC and the host.

1. In **Program Manager**, under **ND Applications**, double-click on the icon for **Serial**.
2. You see a dialog box similar to the one below:

ND Serial Communication

Communication Settings

PORT ☒ COM1 ☐ COM2

Speed 2400 4800 9600

Data length ☒ 7 ☐ 8

Parity ☒ Even ☐ None

Stop bits ☒ 1 ☐ 2

Handshake ☒ XON/XOFF ☐ Hardware

Port Selection

Host Link ☒ COM1 ☐ COM2

Document Transfer

Delay ☐ On ☒ Off

Save Cancel Default

Copyright © 1986/90 Norsk Data a.s.

See the Microsoft Windows User's Guide for an explanation of the various fields.

Note

If you have serial communication and have a 286- or 386SX-computer, you should not use a higher transfer-speed than 4800 baud. At higher speed you might lose both characters in NOTIS Terminal (the terminal emulator) and during file transfer.

Errors that may occur

Your PC slows down

This may happen if you run WinLink and several other programs at the same time. In this case, close one or more of the other programs.

The cursor disappears

When the PC is used as a terminal against a host, the cursor will disappear while the screen is being updated. If the screen contains a lot of graphics, the update may take some time. If, in the mean time, you go to another program, the cursor will not reappear until the update of the first screen is finished.

Graphics are the wrong size

When the PC is used as a terminal against a host, and you use graphic programs (for instance Nortext with graphics option), the graphic pictures will be displayed in the wrong format on the screen. Correct this in the following way:

1. Give the file NDCONFIG write access, by typing the MS-DOS command `C:\>ATTRIB -R NDCONFIG.`
2. Start **NOTEPAD** and open **NDCONFIG**.
3. Find the section **SYSTEM-NAME : OWS.** and the line **OWS-SIZE-MONITOR= .**
4. Write down what is written on the line, so that you can retype it later if necessary (or you may make a copy of the line and precede it by an asterisk (*) to make it a comment).

5. Enter the following on the line:

OWS-SIZE-MONITOR=NON-STANDARD;273;163

where 273 specifies the width and 163 the height.

6. Save the file, and restart the PC.
7. If the graphic pictures still don't have the correct width and height, repeat the procedure with other values for width and height (the values are normally in the range between 270 - 280 and 160 - 170).

Note

We recommend that you do this only for Cornerstone 19" Publisher screens. For EGA and VGA screens, the values for width and height are normally between 250-260 and 140-150.

Error messages

"There is not enough memory for communication"

This may happen if you run WinLink and several other programs at the same time. In this case, close one or more of the other programs.

"This program has not been installed correctly"

You must use the original diskette when you install the program.

"Cannot find the font file: Path/filename"

The reason may be that the nationality setting in CONFIG.SYS no longer corresponds to the nationality of the font files. You can:

- a: Change the nationality in CONFIG.SYS back to its original value.
 - b: Install WinLink again in a language version that corresponds to the nationality setting in CONFIG.SYS.
-

"The connection has been terminated"

Log in again. If this does not work, reboot the PC (by pressing **CTRL+ALT+DEL**), and log in again.

"No access to host computer"

If you get this error message:

- Check that you are logged in on the host (see page 4).
- Check that you are not in a program on the host. This only applies if you are connected via a serial line. If you are working in another program on the host, exit this, and go back to the main menu in User Environment or to the SINTRAN prompt.
- Ask your system supervisor to check that there are no problems with the communication or communication servers.

"Not enough memory to run the program"

This may happen if you run WinLink and several other programs at the same time. In this case, close one or more of the other programs.

"No more ports available"

- Wait a few seconds and try again.
- Reboot the PC (by pressing **CTRL+ALT+DEL**) and log in again.

"No connection to the host"

Contact your system supervisor.

"No communication with the DOS VKM library"

Install PC Starter Kit again.

"No contact with communication medium"

Contact your system supervisor. CONNECT may not be loaded in AUTOEXEC.BAT. It could also be a hardware error.

"No contact with host computer"

Contact your system supervisor.

"No font entry in NDCONFIG for this screen resolution"

Open the dialog box Settings (see page 20), and check the list box **Font**: Normally, there should be five different fonts listed here.

If there are not five fonts in the list box, WinLink is not correctly installed. Install again.

If there are five fonts in the list box, WinLink is correctly installed. The problem is that you do not have a screen that corresponds to the available font types (for instance a very small screen).

"Configuration file missing"

PC Starter Kit is not installed correctly. Install again.

"Low on memory"

This may happen if you run WinLink and several other programs at the same time. In this case, close one or more of the other programs.

"Invalid font entry in NDCONFIG for this screen resolution."

Error in NDCONFIG. Install WinLink again.

"Unknown host"

Choose another host computer (see page 19).

Other programs from Norsk Data that make your work in Windows™ go faster and easier

WinSMX

WinSMX is a pop-up menu for starting any Windows™ or MS-DOS® application. It is always there when you need it. From any Windows program you can either click on the WinSMX icon, or press *Alt+Space* and your WinSMX menu appears. Add any application to the menu quickly and easily. WinSMX is a powerful tool for both novices and professionals.

WinPrint

WinPrint is a program that lets you print directly from Windows™ to a network printer on a SINTRAN machine. With WinPrint you work just like you would if you had your very own private printer. Whether you are using such popular programs as Excel®, AMi®, or PageMaker®, you do not have to exit the program to print. Just use the normal print commands in these programs and your print-job is automatically sent directly to the network printer. You can continue to work even while the file is being sent.

These programs can be ordered from: Your local ND representative or
Norsk Data a.s, P.O Box 25 Bogerud, N-0621 Oslo 6. Telephone: (02) 62 68 70.
Telefax: (02) 62 68 71

